

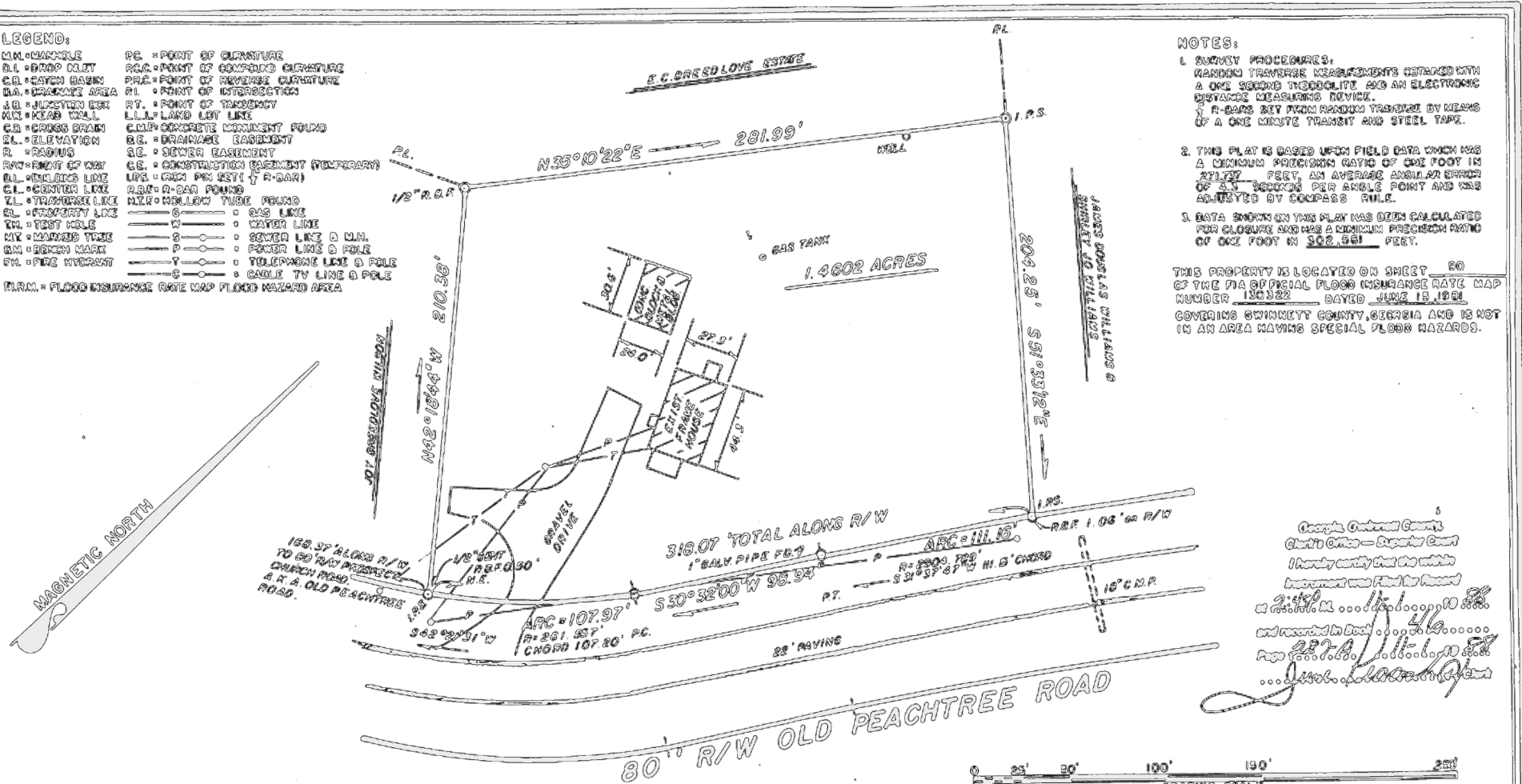
LEGEND:

- | | |
|---------------------|--|
| MM. = MANHOLE | PE. = POINT OF CURVATURE |
| DL. = DROP DILEY | P.C. = POINT OF COMPOUND CURVATURE |
| CB. = CATCH BASIN | P.R.A. = POINT OF REVERSE CURVATURE |
| DA. = DRAINAGE AREA | PI. = POINT OF INTERSECTION |
| JB. = JUNCTION BOX | PT. = POINT OF TANGENCY |
| KW. = KEAD WALL | L.L.L. = LAND LOT LINE |
| CB. = CROSS BARR | C.C.P. = CONCRETE CURVATURE POINT |
| EL. = ELEVATION | B.E. = DRAINAGE BASIN |
| R. = RADII | S.E. = SEWER BASIN |
| R.W. = RIGHT OF WAY | C.E. = CONSTRUCTION EASEMENT (TEMPORARY) |
| BL. = BENCH LINE | W.P. = GAS PIPE (W/ R-20) |
| CL. = CENTER LINE | R.B.P. = R-20 POINT |
| TL. = TRUNK LINE | M.T.P. = MOLLOW TUBE POINT |
| EL. = EASEMENT LINE | —○—○—○ = GAS LINE |
| TM. = TEST HOLE | —○—○—○ = WATER LINE |
| MY. = MARKED TREE | —○—○—○ = SEWER LINE @ MIN. |
| BM. = BENCH MARK | —○—○—○ = POWER LINE @ POLE |
| FM. = FIRE HYDRANT | —○—○—○ = TELEPHONE LINE @ POLE |
| | —○—○—○ = CABLE TV LINE @ POLE |
- FLRM. = FLOOD INSURANCE RATE MAP FLOOD HAZARD AREA

NOTES:

1. SURVEY PROCEDURES:
RANDOM TRAVERSE MEASUREMENTS OBTAINED WITH A ONE SECOND THEODOLITE AND AN ELECTRONIC DISTANCE MEASURING DEVICE.
A 5-DAY SET FROM RANDOM TRAVERSE BY MEANS OF A ONE MINUTE TRANSIT AND STEEL TAPE.
2. THIS PLAN IS BASED UPON FIELD DATA WHICH HAS A MAXIMUM PRECISION RATIO OF ONE FOOT IN 271.87 FEET, AN AVERAGE ANGULAR ERROR OF 2.4 SECONDS PER ANGLE POINT AND WAS ADJUSTED BY COMPASS RULE.
3. DATA SHOWN ON THIS PLAN HAS BEEN CALCULATED FOR CLOSURE AND HAS A MAXIMUM PRECISION RATIO OF ONE FOOT IN 502.98 FEET.

THIS PROPERTY IS LOCATED ON SHEET 80 OF THE FIA OFFICIAL FLOOD INSURANCE RATE MAP NUMBER 130322 DATED JUNE 18, 1981 GOVERNING GWINNETT COUNTY, GEORGIA AND IS NOT IN AN AREA HAVING SPECIAL FLOOD HAZARDS.

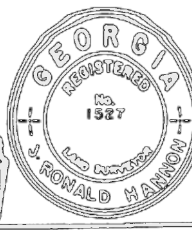


Georgia Oath Book
 Clerk of Court - Gwinnett County
 I hereby certify that the within instrument was filed for record in Book 46, Page 107 of the Public Records of Gwinnett County, Georgia, this 10th day of October, 1983.
 J. R. ...

SURVEY FOR
HAROLD R. FLANIGAN
 LAND LOT(S) G1 of the 7th DISTRICT
 GWINNETT COUNTY, GEORGIA 1.4602 ACRES

DATE: 10-26-83
 SCALE: 1" = 50'
 DRAWN BY: [Signature]
 CHECKED BY: J.B.

IN WITNESS WHEREOF, THIS PLAN IS A TRULY AND CORRECTLY COPYED COPY OF THE ORIGINAL PLAT AND HAS BEEN FILED IN COMPLIANCE WITH THE PUBLIC RECORDS AND RECORDS OF THE COUNTY OF GWINNETT, GEORGIA.



HANNON, MEEKS & BAGWELL,
 SURVEYORS & ENGINEERS, INC.
 250 BUNFORD DRIVE
 LAWRENCEVILLE, GEORGIA 30045
 TELEPHONE: (404) 969-7101

